

# TS4-M



## Monitoring

TS4-M is one of 5 functional covers that pairs with an integrated modular junction box base (TS4-B), a single retrofit/add-on base (TS4-R-M), or a dual retrofit/add-on base (TS4-R-M-Duo).

### Features

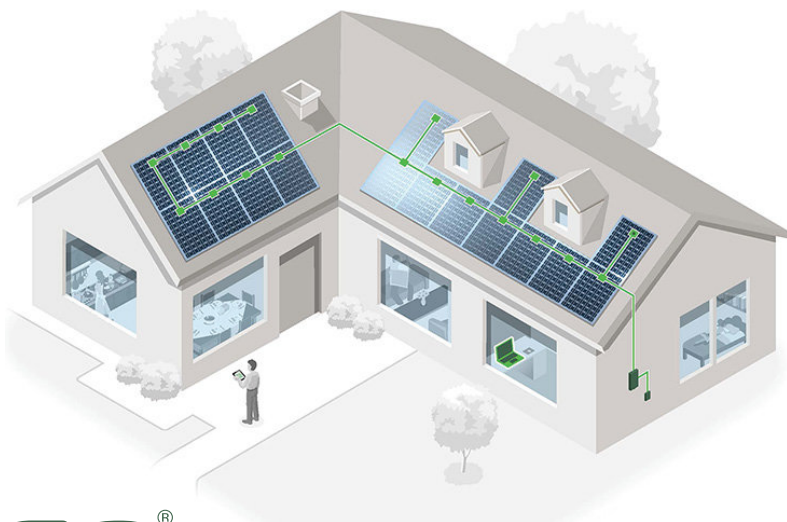
- Reduced O&M cost
- Module bar code tracking
- Warranty tracking
- Fleet management
- CRM integration

### Reduced O&M Costs

- Remotely detect and diagnose performance issues
- Fix problems with a single truck roll: deploy the right person with the right skill level, equipment, and tools to service the site

### Reliable Production

- Alert notifications enable you to intervene early and minimize system downtime



**Tigo**<sup>®</sup>

**PV 2.0**

# Meet any projects' needs with the TS4 covers

Tigo has expanded its smart module platform to provide five levels of customization. TS4 increases your freedom of choice by allowing you to select the right features for each project and budget.

## ELECTRICAL RATINGS

INPUT	
Rated DC Input Power	475W
Max Input Voltage @ Lowest Temp	90V
Max. Continuous Input Current ( $I_{MAX}$ )	12A
Maximum $V_{OC}$ @ STC	75V
Minimum $V_{MP}$	16V
OUTPUT	
Output Power Range	0 - 475W
Output Voltage Range	0 - $V_{OC}$
Rapid Shutdown UL Listed (NEC 2014 & 2017 690.12)	No
Impedance Matching Function	No
Output Voltage Limit	No
Maximum System Voltage	1500V

Cloud Connect Advanced (CCA) and TAP/Gateway required for module-level monitoring.



Diodes



Monitoring

TS4-M

### For sales info:

[sales@tigoenergy.com](mailto:sales@tigoenergy.com) or 1.408.402.0802 ext. 1

### For product info:

Visit [www.tigoenergy.com/products](http://www.tigoenergy.com/products)

### For technical info:

<http://support.tigoenergy.com>

For additional info and product selection assistance, use Tigo's online design tool at [www.tigoenergy.com/design](http://www.tigoenergy.com/design)



**Tigo**<sup>®</sup>

**PV 2.0**